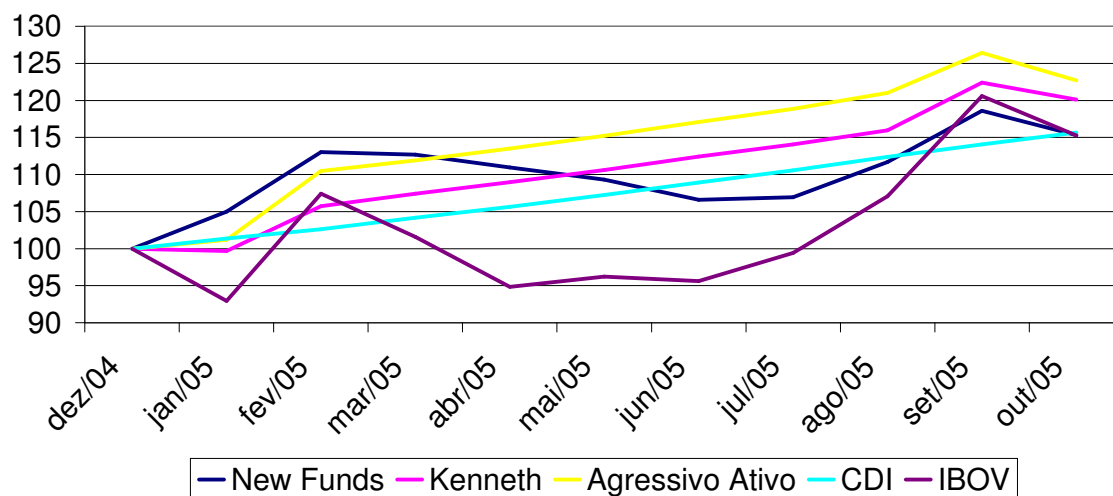


O ranking nacional é comparado com fundos de mesma classificação, considerando-se apenas a Rentabilidade em 2005.

Análise	2004	2005	Mês	Mês Anterior	Risco	% CDI 2004	% CDI 2005	Ranking Nacional
CDI	16,16%	15,68%	1,40%	1,50%	0,15%	100,00%	100,00%	>60 <sup>º</sup>
IBOVESPA	17,82%	15,27%	-4,40%	12,62%	6,58%	110,32%	97,42%	>60 <sup>º</sup>
Conservador Passivo	16,57%	15,38%	1,40%	1,54%	0,19%	102,58%	98,12%	>60 <sup>º</sup>
Conservador Ativo	27,47%	15,69%	0,97%	2,24%	0,85%	170,02%	100,08%	>60 <sup>º</sup>
Moderado Passivo	32,50%	11,67%	-0,32%	5,28%	2,05%	201,18%	74,45%	>60 <sup>º</sup>
Moderado Ativo	50,06%	19,02%	-1,15%	4,53%	2,61%	309,90%	121,34%	34 <sup>º</sup>
Agressivo Passivo	55,41%	4,53%	-3,33%	11,05%	5,35%	342,99%	28,87%	>60 <sup>º</sup>
Agressivo Ativo	64,74%	22,69%	-2,94%	4,44%	4,45%	400,77%	144,71%	9 <sup>º</sup>
Top Ações	60,27%	6,65%	-4,87%	14,70%	6,15%	373,05%	42,40%	>60 <sup>º</sup>
New Funds	-	15,31%	-2,76%	6,18%	3,73%	-	97,67%	>60 <sup>º</sup>
Kenneth	45,98%	20,10%	-1,87%	5,53%	3,03%	284,62%	128,21%	19 <sup>º</sup>

### Acumulado 2005



### Acumulado Total

